



FREQUENTLY ASKED QUESTIONS

- Q: Can you tighten a strap with the BOA WINCH® as much as with a traditional winch? 3**
- Q: Is there a locking mechanism that prevents the BOA WINCH® from loosening? 4**
- Q: Should I be aware of kickback from the BOA WINCH® ratchet handle? 5**
- Q: What is the difference between the Standard and High-Profile BOA WINCH®? 6**
- Q: What is the recommended maintenance on the BOA WINCH®? 7**
- Q: How do I reduce tension or disengage the mechanism? 8**
- Q: What kind of rail or track do I need for the BOA WINCH®? 9**
- Q: If I have a custom track that is not the C or Double L model, what can I do? 10**

Q: Can I weld or bolt on the BOA WINCH® to my trailer? 11

Q: Do you have left-handed and right-handed winches?..... 12

Q: Do you offer chain binders? 13

Q: Can I use the BOA WINCH® with steel cables? . 14

Q: How well does the BOA WINCH® work and hold up to winter conditions? 15

Q: Do I really need to buy the BOA WINCH® handle? 16

Q: Is it still possible to work with the BOA WINCH® when the handle is lost? 18

Q: I sometimes transport oversized cargo and I need more clearance for the BOA WINCH® ratchet handle, do you have a solution? 19

Q: Do I need to use a particular strap with the BOA WINCH®? 20

Q: Can I get a BOA WINCH® in a different color?.. 21

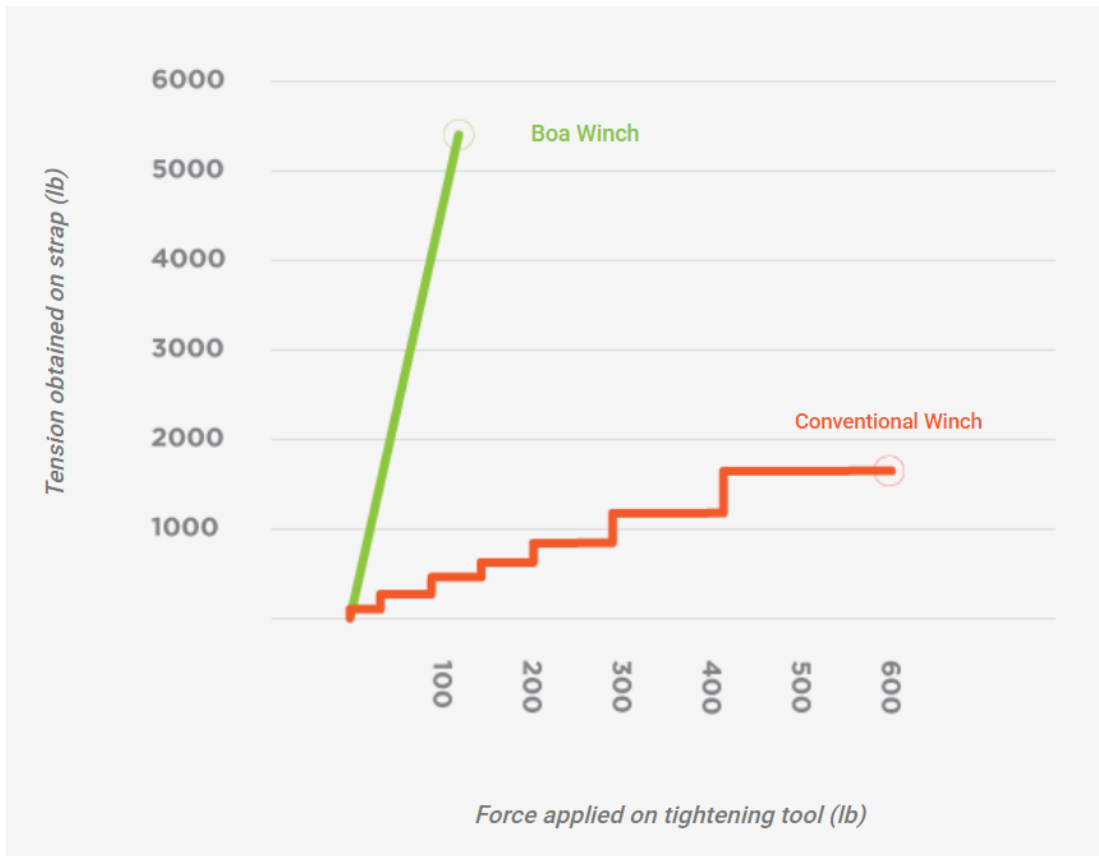
Q: What is the warranty on the BOA WINCH® products?..... 22

Q: Can you tighten a strap with the BOA WINCH® as much as with a traditional winch?

You will be able to apply as much or more tension than with a traditional winch, with much less effort.

The following graph illustrates the difference in the force applied for attaining tensions between both systems. While a user with the traditional winch quickly reaches limited tensions due to the physical strength required, the BOA WINCH® mechanism's reduction ratio allows the user to decrease the strength required and increase the tensions applied to the strap. **The user can attain much higher tension applied with very little effort.**

Furthermore, the tension will be applied gradually, enabling the user to apply the **exact desired tension and avoid over tightening or damaging their load. All while improving the time required for the tiedown segment of the load securement by 30% to 40%.**

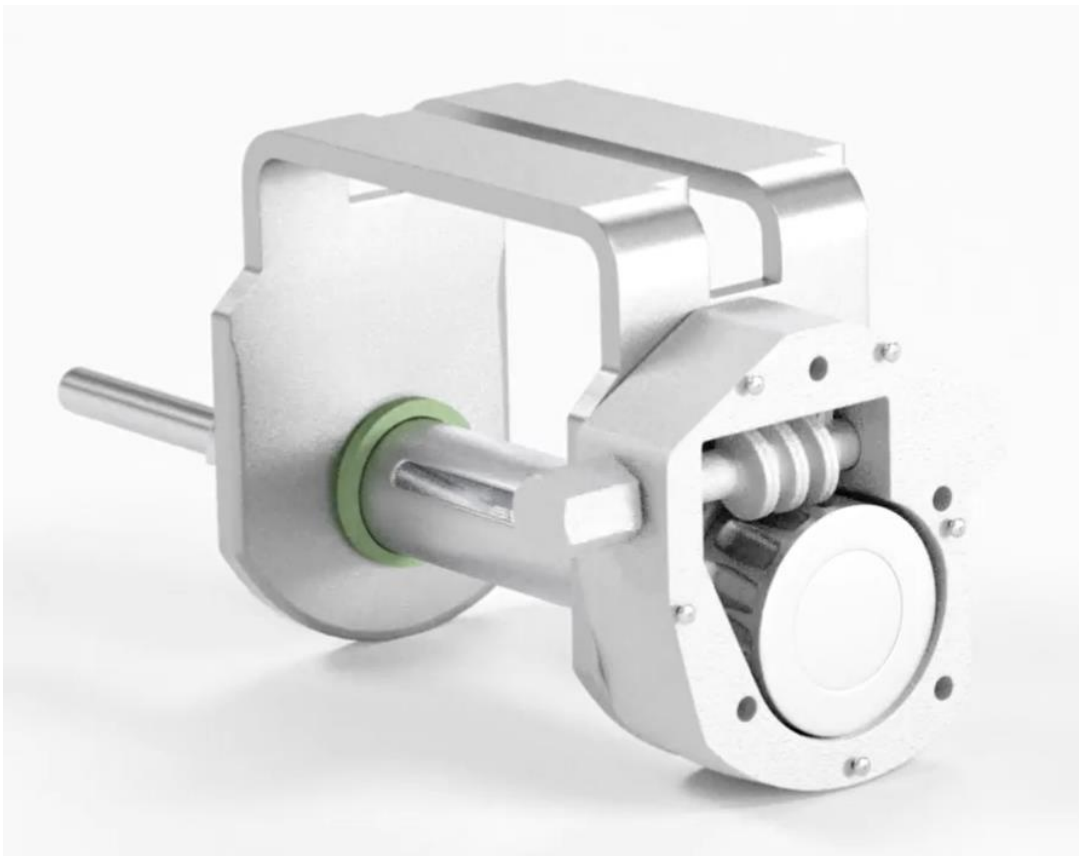


Q: Is there a locking mechanism that prevents the BOA WINCH® from loosening?

No, by design, the BOA WINCH® is **self-locking due to the worm gear mechanism.**

The tension on the strap will be maintained until the hexagonal tightening nut is unscrewed with the BOA WINCH® ratchet handle. By unscrewing the tightening nut, the tension will instantly drop to zero **eliminating any risk of kickback related injuries.**

Subsequently, by pulling the nut out, the mandrel will be released, which will allow the strap to be unrolled or rolled up quickly using the quick rewind handle, located on the left side of the winch.



Q: Should I be aware of kickback from the BOA WINCH® ratchet handle?

We designed the BOA WINCH® and the BOA WINCH® ratchet handle to eliminate all the risks that are associated with the traditional winch bar. This make securing the load safer, faster and easier for the worker.

The tightening or loosening maneuvers of the strap with the traditional winch demonstrate the presence of an elastic tension which can induce a rapid movement of the bar, commonly known as kickback. **This elastic tension is not present with the BOA WINCH® system since the blocking of the tension exerted is done continuously, and by unscrewing its hexagonal nut the tension will drop instantly to zero, eliminating all risks of kickback related injuries.**

The BOA WINCH® ratchet handle was developed ergonomically to allow the user to work in complete safety. It was designed to resist the shocks and the demands of the trade.

For more details, you can read the biomechanics analysis on the benefits of the BOA WINCH® system and the convenience of the 12'' BOA WINCH® ratchet handle in the ergonomics report comparing our handles as well as the traditional winch bar. It is available in the support section of our website.



Q: What is the difference between the Standard and High-Profile BOA WINCH®?

The only difference between Standard and High-Profile models is **the clearance between the main shaft and the winch frame. The Standard models offer a clearance of 3.3" while the High-Profile clearance is 4.9"**.

The standard BOA WINCH® model can store up to 27' straps and the High-Profile BOA WINCH® model can store up to 30' straps. If you do not store your straps on the winch, either model can work depending on the clearance available on the trailer.



BOA-STD-C-ZP

Model – Modèle: C
Type: Standard
Dimensions: 5,5" x 5,9" x 4,0"
Weight – Poids: 13,5 lb
WLL: 5500 lb



BOA-HFP-C-ZP

Model – Modèle: C
Type: High Profile – Haut Profil
Dimensions: 5,5" x 7,5" x 4,0"
Weight – Poids: 14,6 lb
WLL: 5500 lb



BOA-STD-LL-ZP

Model – Modèle: LL
Type: Standard
Dimensions: 5,5" x 5,9" x 4,0"
Weight – Poids: 12,9 lb
WLL: 5500 lb



BOA-HPF-LL-ZP

Model – Modèle: LL
Type: High Profile – Haut Profil
Dimensions: 5,5" x 7,5" x 4,0"
Weight – Poids: 19,5 lb
WLL: 5500 lb

Q: What is the recommended maintenance on the BOA WINCH®?

A greasing point (zerk fitting) is located at the back of the front of the BOA WINCH®, we recommend greasing your winches periodically depending on use and at least one maintenance per season with an **extreme-pressure (EP) synthetic lithium-based grease with molybdenum grade 1 or 2**, in colder areas be sure to use grease grade 1 or even grade 0 in arctic regions.

An overflow is located under the casing in case of over greasing.

Here are some types of grease that fit these recommendations:

Warmer Climate:

Valvoline Full Synthetic Grease VV985 (NLGI grade: 2)

ExxonMobil Mobil 1 Synthetic Grease (NLGI grade: 2)

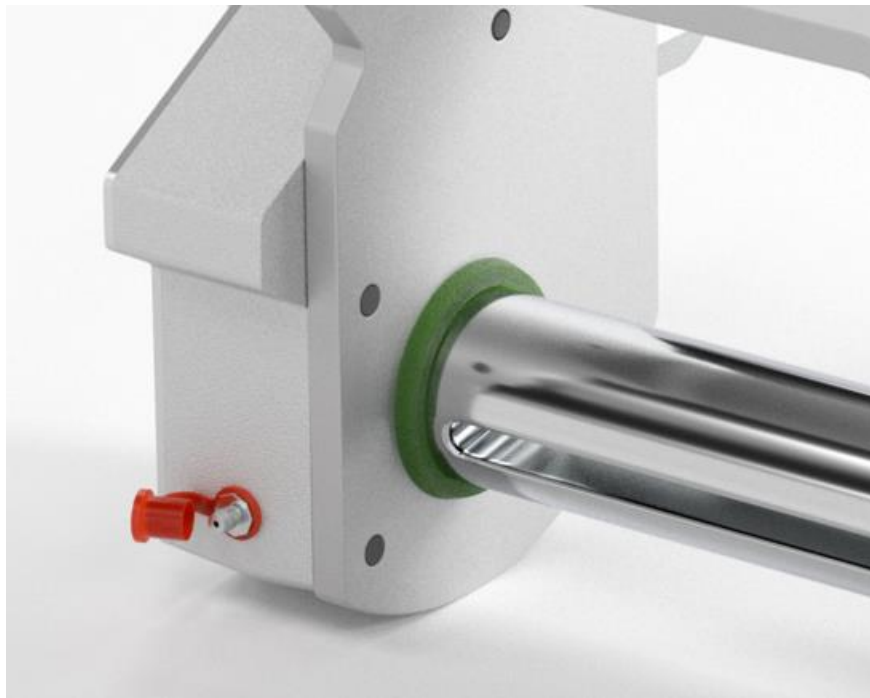
Lucas HEAVY DUTY MINING & CONSTRUCTION GREASE #10881 (NLGI grade: 2)

Colder Climate:

Petro-Canada PRECISION SYNTHETIC MOLY (NLGI grade: 1)

Chevron Delo® Syn-Grease SXD 220 Moly 5% EP #259115 (NLGI grade: 1)

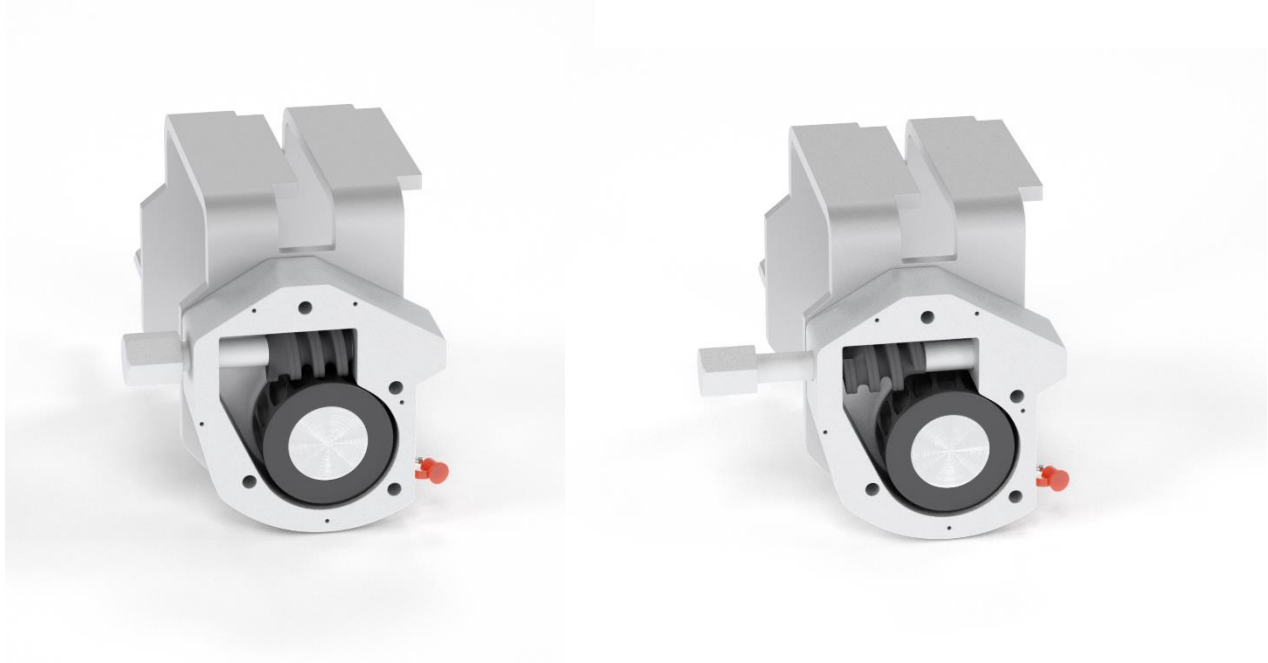
ExxonMobil Mobil 1 Epic EP Moly (NLGI grade: 1.5)



Q: How do I remove tension on the strap or disengage the mechanism?

The tension on the strap can be removed by unscrewing the hexagonal tightening nut with the BOA WINCH® ratchet handle.

The tension on the strap will be maintained until the hexagonal tightening nut is unscrewed. Once unscrewed the user must pull out the nut to completely disengage the worm gear, which will allow the strap to be unrolled freely or rolled up quickly using the quick rewind handle, located on the side of the winch.

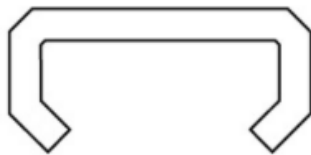


Q: What kind of rail or track do I need to install the BOA WINCH®?

The BOA WINCH® is available in 2 models, for C and Double L slider rails, these types of rails are found on more than 95% trailers. You can look at the profile of your rails to see if they are type C or Double L and if in uncertainty, you can send us a picture of your rails at info@boawinch.com and we will be happy to help you figure out the model you need.

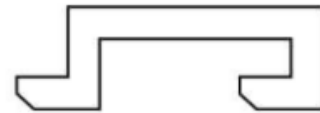
C frame model

COMPATIBLE WITH C FRAME SLIDERS



Double L model

COMPATIBLE WITH LL FRAME SLIDERS



Q: If I have a non-standard track that are not type C or Double L, what can I do?

If you happen to have tracks other than C or Double L track, it is possible your trailer manufacturer installed a non-standard track. Some manufacturers like East Manufacturing, Wilson Trailer Company and Utility Trailers occasionally use other types of rails.

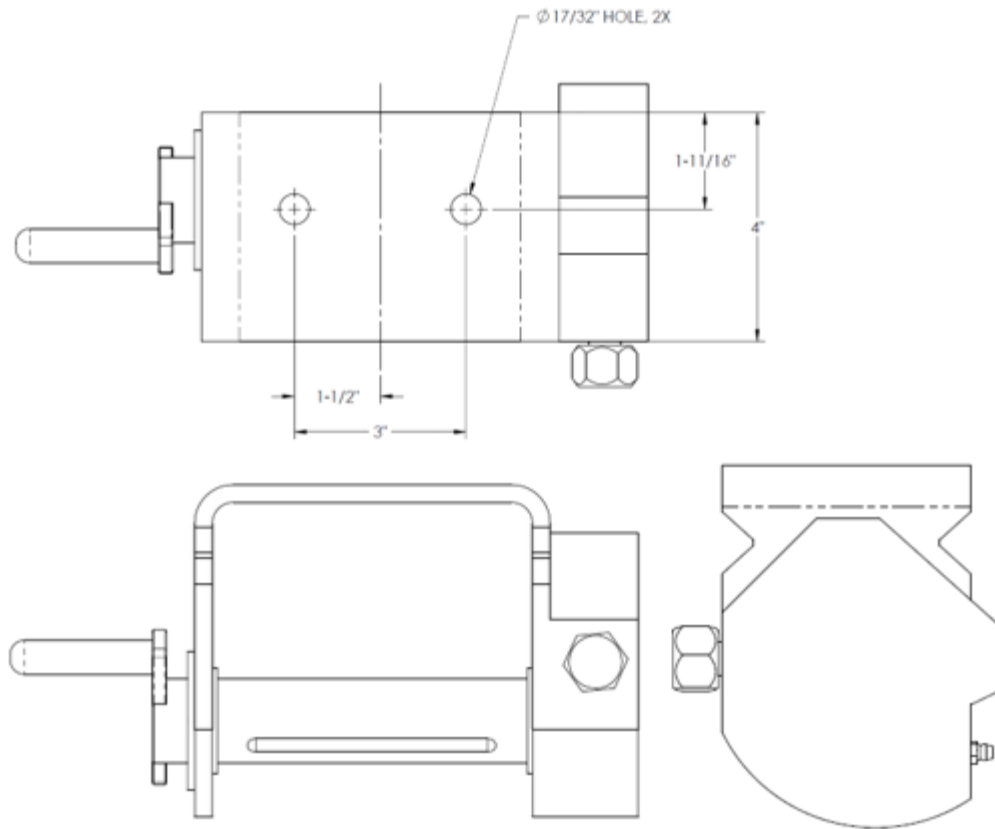
In this case, **you have 2 options:**

1. The easiest and fastest way to solve that matter would be to **swap out your winch tracks for a C or Double L type**. All trailer manufacturers offer these tracks as they are the standard in the industry. Below are some examples of these non-standard winches that exist in the market.
2. If you have a substantial number of trailers with these custom tracks already installed, **we can look into producing a custom batch for your application**. If this sounds like a better solution, contact us directly at info@boawinch.com and we will be happy to help.



Q: Can I weld or bolt on the BOA WINCH® to my trailer?

Yes, you can weld or bolt the BOA WINCH®, C frame model, to your trailer if you prefer not to use a track. We have a bolt pattern available in the support section of our website. Do not hesitate to contact us if you have any question at info@boawinch.com.



- 75 ft-lbs tightening torque.
- ½" grade 8 bolt with washer and lock nut.
- The 1-11/16" rating is relative depending on the needs of the installation and could be centered on the frame or a little more towards the side of the frame.

Q: Do you have left-handed and right-handed winches?

Due to the direction of the forces applied to the gears and the direction of rotation of the mechanism, the gearbox must be located on the right side of the winch.

It does not disadvantage either left-handed or right-handed user as both hands are used in the process and users quickly adopt the technique required to tiedown a load with the BOA WINCH®.

In practice, the right hand is used a little more, so a right-handed user could feel at an advantage.



Q: Do you offer chain binders?

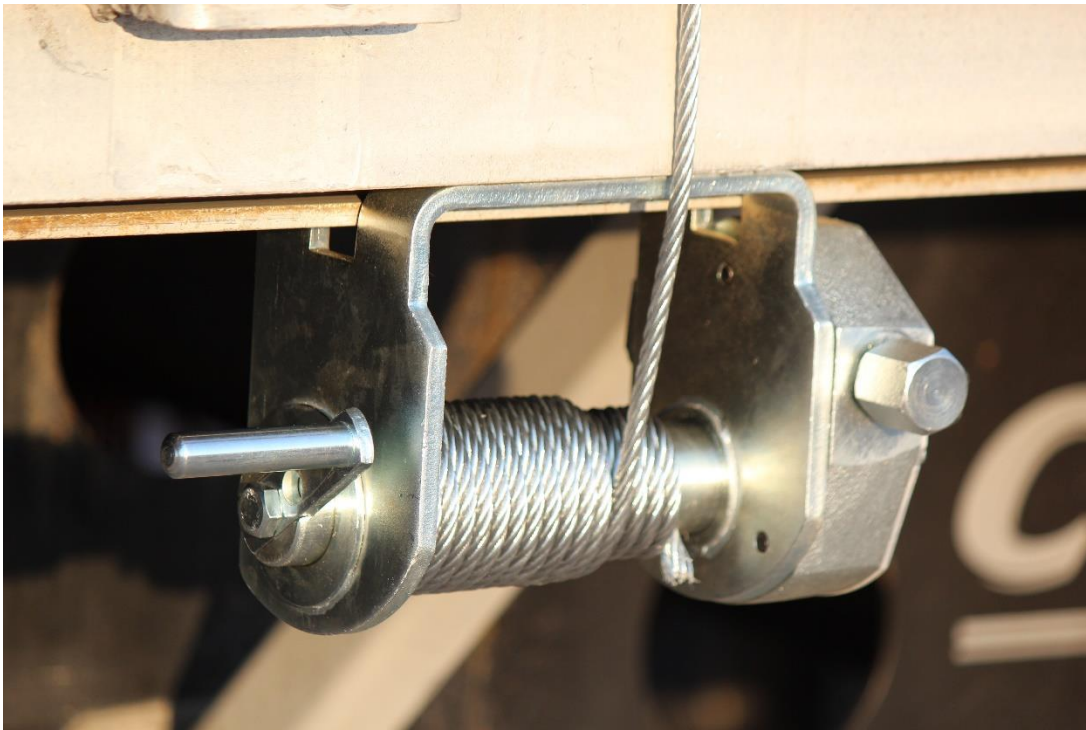
One of the many advantages of the BOA WINCH® is that it **replaces the need for chain binders when used with our 3' Jumper straps (BOA-S303-A1010)**. It allows a perpendicular securing of loads using chains when required.

BOA WINCH®: one product, 3 ways to tie down; straps, chains and cables.



Q: Can I use the BOA WINCH® with steel cables?

The BOA WINCH® is compatible with cables of a diameter up to ¼". If you are using steel cables with a larger circumference, send us a request at info@boawinch.com so we can adapt the BOA WINCH® to meet your requirements.



Q: How well does the BOA WINCH® works and holds up to winter conditions?

Our line of products was designed in Quebec, Canada, where the winters and road conditions are extremely harsh compared to the rest of North America, so you can bet that we took this into consideration. In addition, we have mandated the NRC (National Research Council Canada) to optimize the BOA WINCH® to cope with any condition.

The BOA WINCH® also has an **anti-corrosion Dacromet® coating, nylon and stainless steel parts** which have been road tested for years in addition to laboratory testing and analysis in controlled environments.

BOA WINCH® has been subject to salt spray exposure tests according to the ISO 14993 standard (1000 hours of exposure). Additionally, impact resistance tests were carried out according to SAE J400 (blasted gravel) at temperatures down to -40°C.

The BOA WINCH® surpasses industry standards as well as competitive products.

In colder regions, be sure to use the recommended types and grades of grease.

Q: Do I really need to buy the BOA WINCH® handle?

The BOA WINCH® ratchet handle was developed ergonomically to allow the user to work in complete safety. Reversible, the BOA WINCH® ratchet handle allows the user to quickly tighten and undo their load, apply the desired tension without kickback related injury risks. The BOA WINCH® ratchet handle makes it easy to work in tight spaces.

Do not use an impact type drill or a drill over 20 volts. This could prematurely wear or damage the gear. Final tension should be applied using the BOA WINCH® ratchet handle to ensure the load is secure and the desired tension is achieved. Tightening your BOA WINCH® with an unauthorized tool may void the manufacturer's warranty.

Whether you use a drill for pre-tightening or just the BOA WINCH® ratchet handle, your **tie down time will be improved by 30% to 40%.**

The handles are offered in 2 models: the Standard BOA WINCH® ratchet handle with a 4" socket and the Deep BOA WINCH® ratchet handle with a 6". Deep BOA WINCH® ratchet handles are recommended with trailers that need more clearance.

The new generation of 12" BOA WINCH® ratchet handles are reinforced and compatible with the BOA WINCH® extensions.



BOA-RH-0-12
Type: Standard
Length – Longueur: 12"
Depth – Profondeur: 4"
Weight – Poids: 3,7 lb



BOA-DRH-0-12
Type: Deep / Profond
Length – Longueur: 12"
Depth – Profondeur: 6"
Weight – Poids: 4,1 lb



Q: Can I use a drill instead of the BOA WINCH® handle?

It is possible to **pre-tighten** the load with a regular battery powered 20V drill or less. However, **the final tension must be applied with the BOA WINCH® ratchet handle** to ensure the load is secure and the desired tension is achieved.

Whether you are using a drill to pre tighten your load or only using the BOA WINCH® ratchet handle, **your tie down time will be improved by 30% to 40%.**

Do not use an impact type drill or a drill over 20 volts. This could prematurely wear or damage the gear. Final tension should be applied using the BOA WINCH® ratchet handle to ensure the load is secure and the desired tension is achieved. Use with an unauthorized tool can potentially void the manufacturer's warranty.



Q: Is it still possible to work with the BOA WINCH® when the handle is lost?

To be able to continue your activities if you are unable to use your BOA WINCH® ratchet handle, the tightening hexagonal nut is a standard 1" SAE nut. **For immediate use, you may use a 1" wrench or a ratchet to tighten or loosen the hexagonal nut.**



Q: Sometimes, I transport oversized cargo and I need more clearance for the BOA WINCH® ratchet handle, do you have a solution?

Whether you have a sliding tarp trailer, are hauling oversized cargo or the position of your BOA WINCH® is not standard, we offer the BOA WINCH® extensions for you to keep working safer, faster and easier no matter your situation.

The BOA WINCH® extensions are available in two sizes, 6" and 12". They are compatible with the latest generation of BOA WINCH® ratchet handles. It may be installed temporarily with a wire-lock pin or permanently with the coiled spring pin (included with the extension).



BOA-EXT-6



BOA-EXT-12



Q: Do I need to use a particular strap with the BOA WINCH®?

The BOA WINCH® can be used with any strap on the market with a width of up to 4", no matter the length, with a working load limit (WLL) not exceeding 5500 lb. The Standard BOA WINCH® allows you to wind a strap of a length up to 27' long and the High-Profile BOA WINCH® allows you to wind a strap of a length up to 30' long.

Depending on the grade of the straps available on the market, we have noticed that some models may alter the securing performance by adhering less to the BOA WINCH® mandrel.

You can always be sure that with the BOA WINCH® straps you will have the optimal performance and that your load will be safely secured.

The BOA WINCH® straps have been designed to be more resistant to abrasion, to maintain flexibility and be lighter by absorbing less water. This facilitates use in wet conditions or in very cold weather. The working load limit (WLL) is displayed on the strap and the conformity tag is fully sewed on stopping it from getting torn off making it always visible throughout its lifetime. In addition, they also have reflective bands for better visibility.

The BOA WINCH® straps are offered in different sizes and models. If you cannot find what you are looking for on our website, contact us at info@boawinch.com.

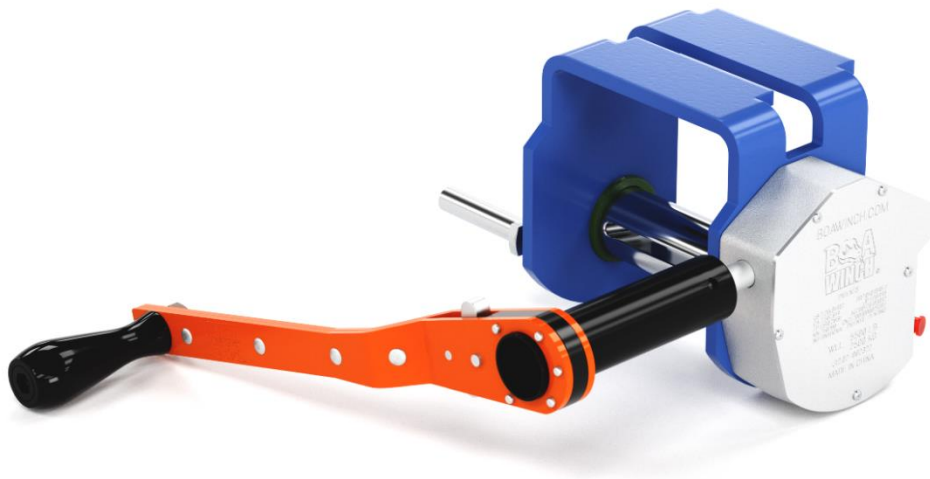


Q: Can I get a BOA WINCH® in a different color?

Colored BOA WINCH® are only available on special order with a 100 unit MOQ. Please note that there will be production delay and additional cost that can vary depending on the size of the order.

Please, contact us for more details. info@boawinch.com.

The silver winches (-ZP) are available in stock.



AVAILABLE COLORS



Q: What is the warranty on the BOA WINCH® products?

We back that claim with our BOA WINCH® products with a 1-year warranty against manufacturing defects. (Excluding the BOA WINCH® straps)

Our products surpass the highest industry testing standards. They have been subjected to several months of tests and analysis with the NRC (National Research Council Canada) and have proven themselves on the road for several years.

BOA WINCH® straps are guaranteed for 6 months.

Please refer to our warranty section of our website for more information.